

# CLARKIE<sup>®</sup>

*air*



## AIR NIBBLER

MODEL NO: CAT63

PART NO: 3110463

## OPERATING & MAINTENANCE INSTRUCTIONS

UK  
CA | CE

DL1222 R1

---

## **INTRODUCTION**

---

Thank you for purchasing this CLARKE Air Nibbler.

Before attempting to use this product, please read this manual thoroughly and follow the instructions carefully. In doing so you will ensure the safety of yourself and that of others around you, and you can look forward to your purchase giving you long and satisfactory service.

---

## **GUARANTEE**

---

This product is guaranteed against faulty manufacture for a period of 12 months from the date of purchase. Please keep your receipt which will be required as proof of purchase.

This guarantee is invalid if the product is found to have been abused or tampered with in any way, or not used for the purpose for which it was intended.

Faulty goods should be returned to their place of purchase, no product can be returned to us without prior permission. This guarantee does not effect your statutory rights.

---

# GENERAL SAFETY RULES

---



CAUTION: FAILURE TO FOLLOW THESE PRECAUTIONS COULD RESULT IN PERSONAL INJURY, AND/OR DAMAGE TO PROPERTY.

---

## WORK ENVIRONMENT

1. Keep the work area clean and tidy.
2. Dress appropriately - Do not wear loose clothing or jewellery. Tie long hair out of the way.
3. Keep children and visitors away - Do not let children handle the tool.

## USE

1. Stay alert and use common sense - do not operate this tool when you are tired or under the influence of alcohol, drugs or medication.
2. Always wear eye protectors when using air tools. Eye protectors must provide protection from flying particles from the front and the side.
3. Do not overreach - Keep proper footing and balance at all times.
4. Never use oxygen, CO<sub>2</sub>, combustible gasses, or any bottled gas, as a source of power for the grease gun. This product should only be used with a suitably rated compressed air supply.
5. Do not connect the air supply hose with your finger on the trigger of the gun.
6. Do not fit the tool to any stand or clamping device that may damage it.
7. Do not exceed the maximum pressure for the tool of 90 psi / 6.2 bar.
8. Keep the air supply hose away from heat, oil and sharp edges.
9. Check hoses for leaks or excessive wear before use, and ensure that all connections are secure.
10. Do not use the tool for any other purpose than described in this manual.
11. Do not carry out any alterations or modifications to the tool.
12. Always disconnect from the air supply when:
  - Performing any maintenance.
  - The tool is not in use.
  - The tool will be left unattended.

- Moving to another work area.
  - Passing the tool to another person.
  - Never use the tool if it is defective or operating abnormally.
13. This tool should be serviced at regular intervals by qualified service personnel.
  14. Avoid damaging the tool for example by applying excessive force of any kind.
  15. Always maintain the tool with care. Keep it clean for the best and safest performance.
  16. Do not force or misuse the tool. It will do a better and safer job at the rate for which it was designed.

## **HAZARDS SPECIFIC TO CUTTING TOOLS**

1. Be careful around all moving parts and pinch points. Always keep your fingers away from the point of cutting.
2. Ensure material is properly supported during cutting. Use supports for long material. Hold the material securely to prevent it tilting during the cut. Use clamps or vices to hold the work piece whenever possible.
3. Take care of sharp edges produced by the cutting operation.
4. Do not use damaged punches. When replacing cutting tool parts make sure they are correctly and securely mounted.
5. Anticipate the unexpected tool movement due to a binding punch. Release the trigger immediately if this occurs.

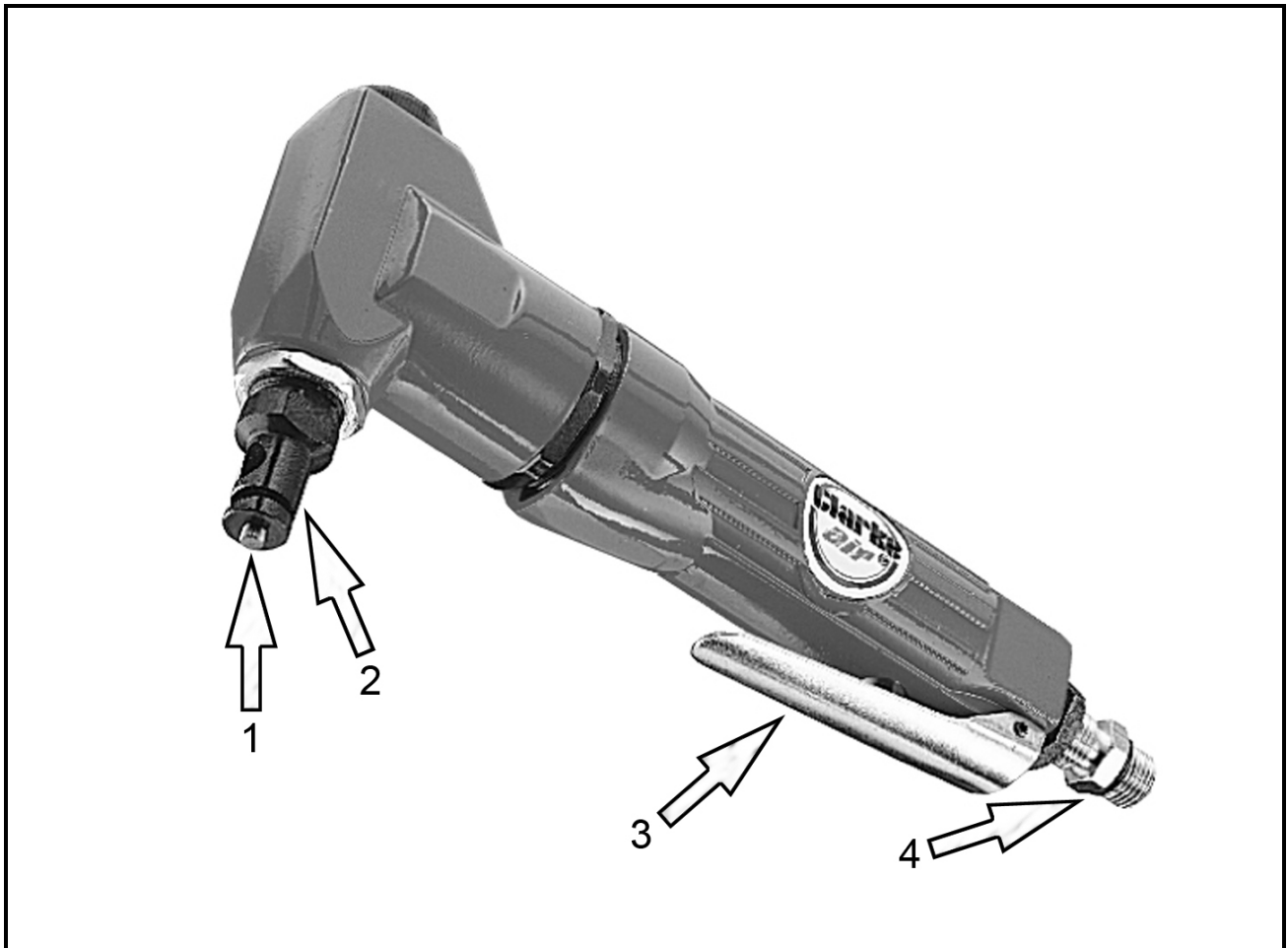
## **TRANSPORTATION**

1. Never carry an air tool by the air supply hose.
2. Never carry an air tool with your finger on the trigger.

## **STORAGE**

1. When not in use, the tool must be disconnected from the air supply and stored in a dry place out of the reach of children (preferably in a locked cabinet).
2. Avoid storing in cold environments.

# OVERVIEW



NO	DESCRIPTION	NO	DESCRIPTION
1	Punch	3	Trigger
2	Die	4	Air Inlet

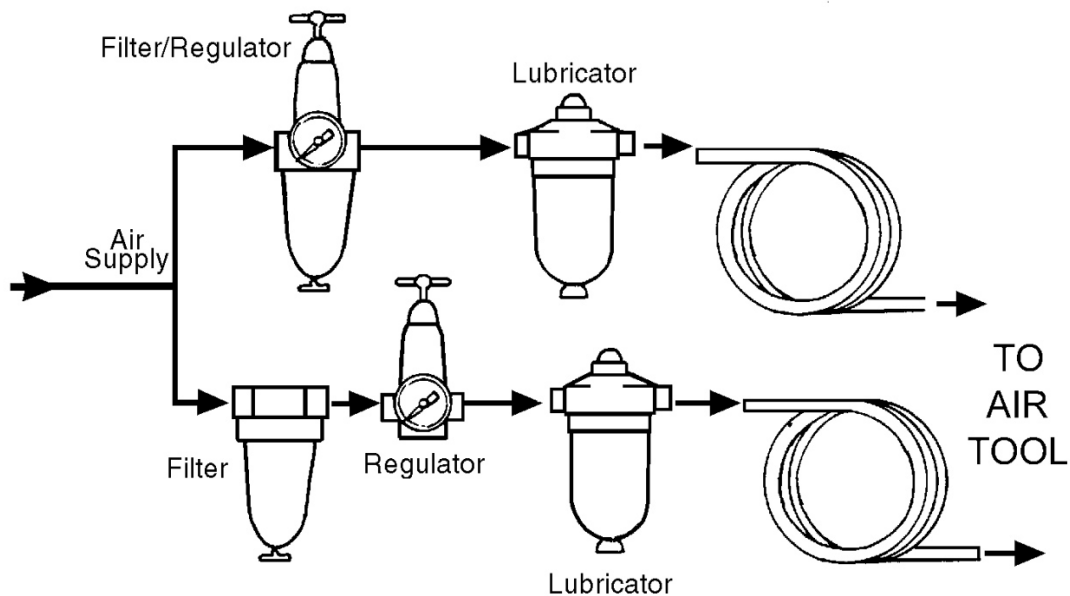
The CAT63 Air Nibbler is ideal for fast, accurate sheet metal cutting of curved or intricate shapes using its 4-way adjustable punch head. The punch and die can be rotated through 360° to aid access and obtain maximum consumable life.

# COMPRESSED AIR REQUIREMENTS



**WARNING: COMPRESSED AIR CAN BE DANGEROUS. ENSURE THAT YOU ARE FAMILIAR WITH ALL PRECAUTIONS RELATING TO THE USE OF COMPRESSORS AND A COMPRESSED AIR SUPPLY.**

- Use only clean, dry, regulated compressed air as a power source.
- Air compressors used with the tool must comply with the appropriate European Community Safety Directives.
- A build-up of moisture or oil in the air compressor will accelerate wear and corrosion in the tool. ensure any moisture is drained from the compressor daily and the inlet filter is kept clean.
- If an unusually long air hose is required, (over 8 metres), the line pressure or the hose inside diameter may need to be increased.
- The air hose must be rated at least 150% of the maximum operating pressure of the tool.



- A typical air line layout is shown above. If an automatic in-line filter/regulator is used, it will keep the tool in good condition, but should be regularly checked & topped up with oil. Clarke air-line oil should be used, and the lubricator adjusted to approx 2 drops per minute.
- Never exceed the maximum operating pressure for the tool. It is recommended that air pressure to this tool does not exceed 90 psi at the tool when running. Higher pressures and unclean air will shorten the life of the tool due to faster wear and is a possible safety hazard.

---

## BEFORE USE

---

**NOTE:** Ensure the compressor is turned off.

1. If required, connect an in-line mini oiler to the tool.
  - A mini oiler helps to prolong the life of the air tool.
2. If a mini-oiler is not being used, run a few drops of oil through the tool before use. It can be entered through the inlet connector or via the hose at the nearest connection to the air supply.
3. Connect a suitable hose as shown.
4. Connect the other end of the hose to the compressor.
5. Turn on the air supply and check for air leaks. Rectify any found before proceeding.
  - PTFE tape may be helpful for sealing threaded connections.
6. Your air tool is now ready for use.



You can fit a whip hose with a quick fit coupling if required (available from your Clarke dealer).

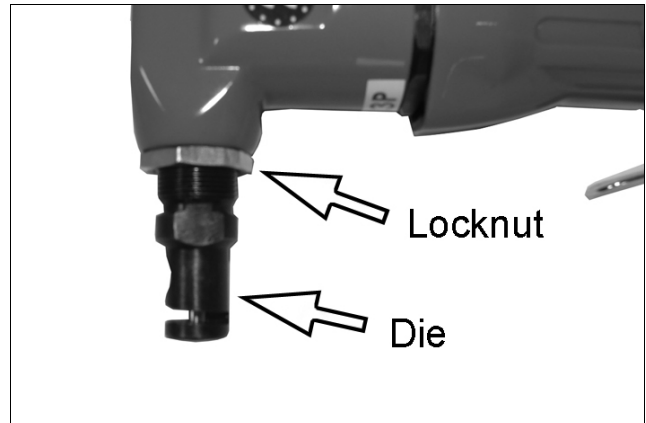
---

## OPERATION

---

In order to improve access to the workpiece, the die can be rotated through 360°.

1. To do this, loosen the locknut with a 22mm spanner and rotate the die on the punch until it is in the right position for the job in hand.
2. Hold the die steady with a 15mm spanner on its flats and retighten the locknut.
3. Ensure your workpiece is properly secured and marked out.



4. Connect the nibbler to the airline.
5. Start the nibbler by squeezing the throttle lever.
6. Introduce the sheet metal into the slot in the end of the die. Apply only light pressure to move the tool in the desired direction through the material.
7. Do not allow the nibbler to run freely for long periods of time as this could harm the bearings.

**NOTE:** It is recommended that a whip hose with a swivel (not included) be used to prevent twisting, kinking and resultant wear to the air hose.

### DISCONNECTING THE AIR SUPPLY

Do not disconnect the air supply hose until the compressor has been shut down and the compressed air released.

1. Refer to the compressor instruction manual for the procedure to shut down and release the compressed air.
2. Once the pressure has been released, disconnect the air supply hose from the air tool.
3. Store the tool safely in its box in a dry, secure environment.



---

# MAINTENANCE

---



**WARNING: MAKE SURE THAT THE AIR TOOL IS DISCONNECTED FROM THE AIR SUPPLY BEFORE STARTING ANY CLEANING, OR MAINTENANCE PROCEDURES.**

---

## DAILY

1. Before use, drain water from the air-line and compressor.
2. This air tool should be lubricated before use. Turn the tool upside down and pour 1-2 drops of Clarke air-line oil into the air inlet. This should be carried out regardless of whether or not an in-line mini oiler is used. If an in-line mini oiler is not used, this procedure should be repeated after every two hours of constant use.

## CLEANING

1. Keep the tool clean.
2. Deposits in the tool may also reduce efficiency. This can be corrected by cleaning the air inlet and flushing out the tool with gum solvent oil, or failing this, the tool should be disassembled, thoroughly cleaned, dried and reassembled.
3. If the tool becomes inefficient and the air supply is of good quality, it may be necessary to replace worn or damaged parts. You may prefer to take the tool to your Clarke dealer if internal maintenance is required.

Your Clarke air tool has been designed to give long and trouble free service. If, however, having followed the instructions in this booklet carefully, you encounter problems, take the unit to your local Clarke dealer.

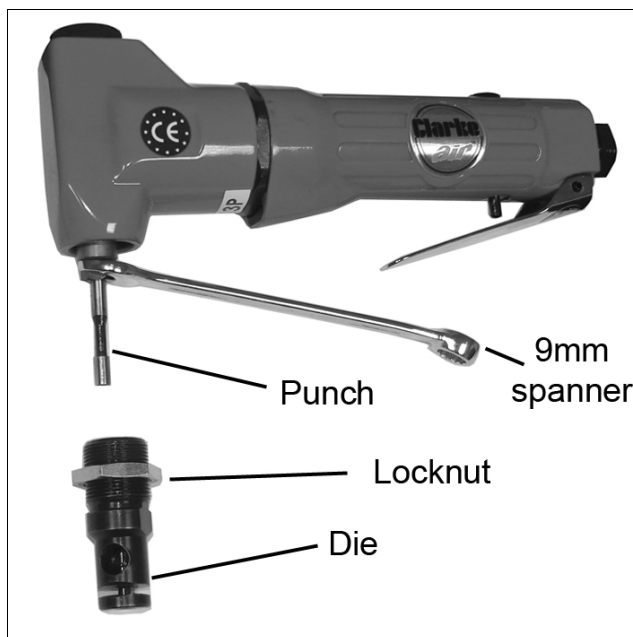
## PERFORMANCE

Please note that factors other than the tool may effect its operation and efficiency such as reduced compressor output, excessive drain on the airline, moisture or restrictions in the air-line, or the use of connectors of improper size or poor condition which will reduce air supply.

\*\*Clarke Air-Line Oil (part no. 3050825) is available from your Clarke dealer.

## CHANGING THE PUNCH AND DIE

1. Loosen the locknut using a 22mm spanner and unscrew the die (with the locknut on it) from the body of the tool.
2. Place a 9mm spanner onto the hex section of the die collar as shown and undo/remove the die collar and punch.
3. Remove the old punch from the collar and insert the new one.
4. Screw the collar and punch back into place and tighten with the spanner.
5. Slide the die and locknut over the punch and screw it back into the nibbler until the bottom of the punch is flush with the bottom of the die. Rotate the die into the best position required by the workpiece. Hold the die steady with a 15mm spanner on its flats and re-tighten the locknut.



## STORAGE

If the tool is to be stored, or is idle for longer than 24 hours, run a few drops of Clarke air-line oil into the air inlet, and depress the trigger in order to lubricate the internal parts.

When not in use, disconnect from air supply, clean and store in a safe, dry place.

## ACCESSORIES

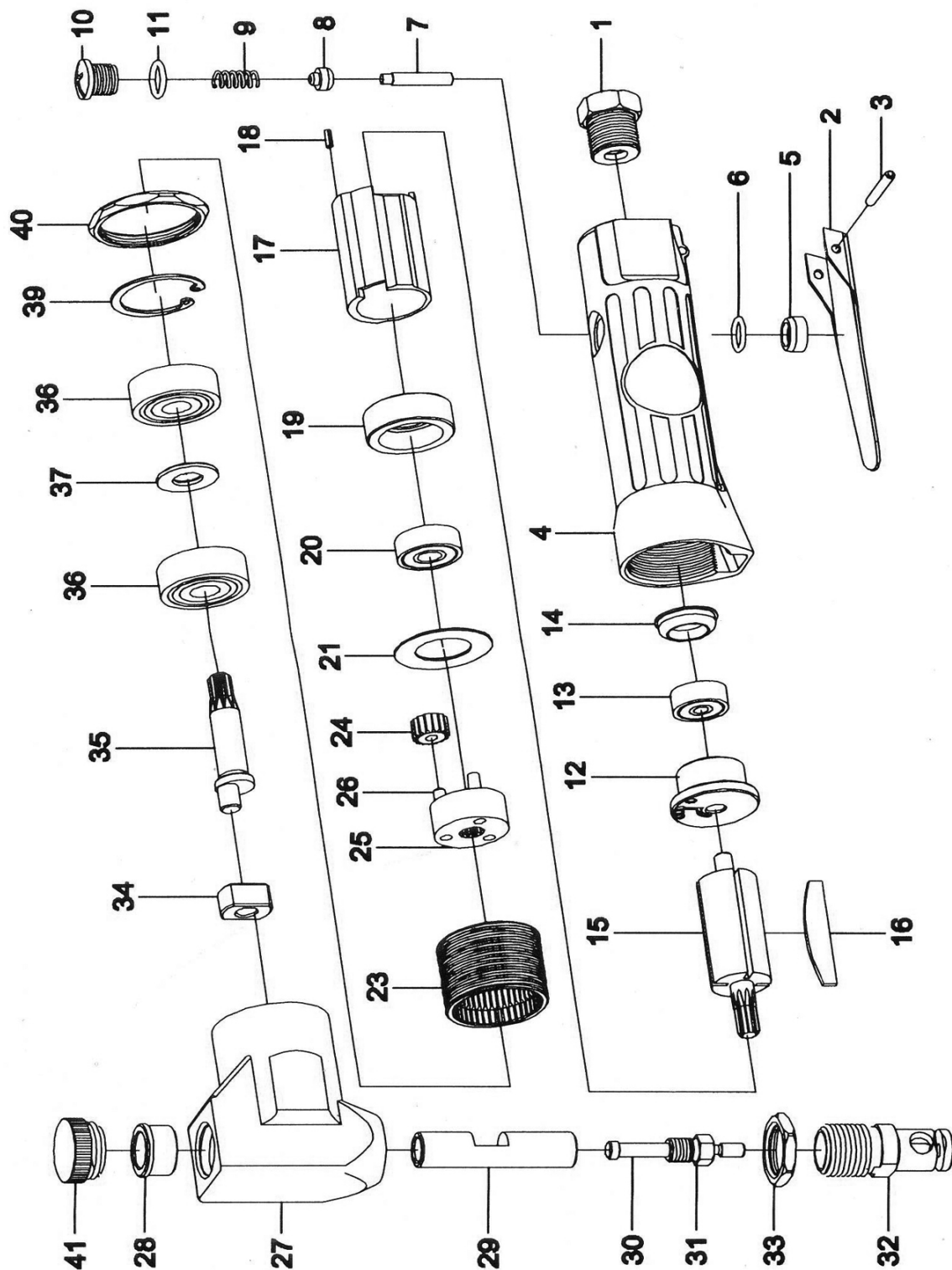
A wide range of airline accessories is available including filter/regulators, lubricators, high-pressure hoses (5 to 50 metres) etc.

Contact your Clarke dealer or Clarke International Service Department for further information.

# TROUBLESHOOTING

SYMPTOM	PROBLEM	SOLUTION
Tool runs at normal speed but slows down under any load.	<ol style="list-style-type: none"> <li>1. Motor parts worn.</li> <li>2. Worn or sticking mechanism due to lack of lubricant.</li> </ol>	<ol style="list-style-type: none"> <li>1. Return to Clarke dealer for repair.</li> <li>2. Drip air tool lubricating oil into air inlet. Allow oil to soak moving parts before using.</li> </ol>
Tool runs slowly. Air flows weakly from exhaust.	<ol style="list-style-type: none"> <li>1. Motor parts jammed with gum/dirt.</li> <li>2. Air-line regulator in closed position.</li> <li>3. General airflow blocked by dirt.</li> </ol>	<ol style="list-style-type: none"> <li>1. Examine inlet air filter for blockage. Drip a few drops of air tool lubricating oil into air inlet.</li> <li>2. Adjust in-line regulator to open position.</li> <li>3. Operate tool in short bursts.</li> </ol>
Tool will not run. Air flows freely from exhaust.	<ol style="list-style-type: none"> <li>1. Motor vanes stuck due to buildup of foreign material.</li> </ol>	<ol style="list-style-type: none"> <li>1. Disconnect air supply and rotate tool assembly manually.</li> <li>2. Try operating tool in short bursts.</li> <li>3. Tap motor housing gently with a rubber mallet.</li> <li>4. Drip a few drops of air tool lubricating oil into air inlet to soak moving parts.</li> </ol>
Tool will not shut off.	<ol style="list-style-type: none"> <li>1. Throttle O-rings damaged or ill-fitting in seat.</li> </ol>	<ol style="list-style-type: none"> <li>1. Return to Clarke dealer for repair.</li> </ol>

# PARTS DIAGRAM



## PARTS LIST

No	Description	Part No
1	Air Inlet Connector	607A001
2	Throttle lever	607A002
3	Hinge Pin	607A003
4	Throttle Lever	607A004
5	O-Ring Keeper	607A005
6	O-Ring	607A006
7	Valve Stem	607A007
8	Valve Ball	607A008
9	Spring	607A009
10	Plug	607A010
11	O-Ring	607A011
12	Rear End Plate	607A012
13	Bearing	607A013
14	End Plate Cap	607A014
15	Rotor	607A015
16	Vanes (set)	607A016
17	Cylinder	607A017
18	Pin	607A018
19	Front End Plate	607A019
20	Bearing	607A020

No	Description	Part No
21	Washer	607A021
22	n/a	607A022
23	Gear Case	607A023
24	Idler Gear	607A024
25	Rear Spindle	607A025
26	Idler Gear Pin	607A0026
27	Nibbler Head	607A0027
28	Push Rod Bush	607A0028
29	Push Rod	607A0029
30	Cutter	607A0030
31	Screw	607A0031
32	Die	607A0032
33	Nut	607A0033
34	Drive Bushing	607A0034
35	Shaft	607A0035
36	Bearing	607A0036
37	Washer	607A0037
38	n/a	607A0038
39	Snap Ring	607A0039
40	Nut	607A0040
41	Plug	607A0041

---

## SPECIFICATION

---

<b>Model Numbers</b>	<b>CAT63</b>
Part Numbers	3110463
Max Cutting thickness	1.2 mm (mild steel/aluminium)
Min. cutting radius	25 mm
Punch Head type	4-way (left/right/forward/reverse)
Maximum speed	3000 strokes/minute
Maximum Operating Pressure	90 psi (6.2 bar)
Air Consumption	4 cfm
Air Inlet Size	1/4" BSP thread
Vibration Levels	<1.76m/s <sup>2</sup>
Sound Power level	103 dB LWA
Sound Pressure Level	94 dBA
Dimensions (L x W x H)	194 x 38 x 106 mm
Weight	0.8 kg

Please note that the details and specifications contained herein are correct at the time of going to print. However Clarke International reserve the right to change specifications at any time without prior notice.

# DECLARATION OF CONFORMITY



Hemnal Street, Epping, Essex CM16 4LG

## DECLARATION OF CONFORMITY

This is an important document and should be retained.

We hereby declare that this product(s) complies with the following statutory requirement(s):

*Supply of Machinery (Safety) Regulations 2008*

The following standards have been applied to the product(s):

EN ISO 28927-7:2009, EN ISO 15744:2008, EN ISO 4871:1996

The technical documentation required to demonstrate that the product(s) meet(s) the requirement(s) of the aforementioned legislation has been compiled and is available for inspection by the relevant enforcement authorities.

The UKCA mark was first applied in: 2022

Product Description: Air Nibbler  
Model number(s): CAT63  
Serial / batch Number: N/A  
Date of issue: 29/11/2022

Signed:

J.A. Clarke  
Director



Fitzwilliam Hall, Fitzwilliam Place, Dublin 2

## DECLARATION OF CONFORMITY

This is an important document and should be retained.

We hereby declare that this product(s) complies with the following directive(s):

2006/42/EC *Machinery Directive*

The following standards have been applied to the product(s):

EN ISO 28927-7:2009, EN ISO 15744:2008, EN ISO 4871:1996

The technical documentation required to demonstrate that the product(s) meet(s) the requirement(s) of the aforementioned directive(s) has been compiled and is available for inspection by the relevant enforcement authorities.

The CE mark was first applied in: 2010

Product Description: Air Nibbler  
Model number(s): CAT63  
Serial / batch Number: N/A  
Date of issue: 29/11/2022

Signed:

J.A. Clarke  
Director

# A SELECTION FROM THE VAST RANGE OF

# Clarke®

## QUALITY PRODUCTS



**AIR COMPRESSORS**  
From DIY to industrial, Plus air tools, spray guns and accessories.

**GENERATORS**  
Prime duty or emergency standby for business, home and leisure.

**POWER WASHERS**  
Hot and cold, electric and engine driven - we have what you need

**WELDERS**  
Mig, Arc, Tig and Spot. From DIY to auto/industrial.

**METALWORKING**  
Drills, grinders and saws for DIY and professional use.

**WOODWORKING**  
Saws, sanders, lathes, mortisers and dust extraction.

**HYDRAULICS**  
Cranes, body repair kits, transmission jacks for all types of workshop use.

**WATER PUMPS**  
Submersible, electric and engine driven for DIY, agriculture and industry.

**POWERTOOLS**  
Angle grinders, cordless drill sets, saws and sanders.

**STARTERS/CHARGERS**  
All sizes for car and commercial use.



## PARTS & SERVICE: 0208 988 7400

**Parts Enquiries**  
[Parts@clarkeinternational.com](mailto:Parts@clarkeinternational.com)

**Servicing & Technical Enquiries**  
[Service@clarkeinternational.com](mailto:Service@clarkeinternational.com)

SALES: UK 01992 565333 or Export 00 44 (0)1992 565335

**Clarke** INTERNATIONAL Hemnall Street, Epping, Essex CM16 4LG  
[www.clarkeinternational.com](http://www.clarkeinternational.com)